

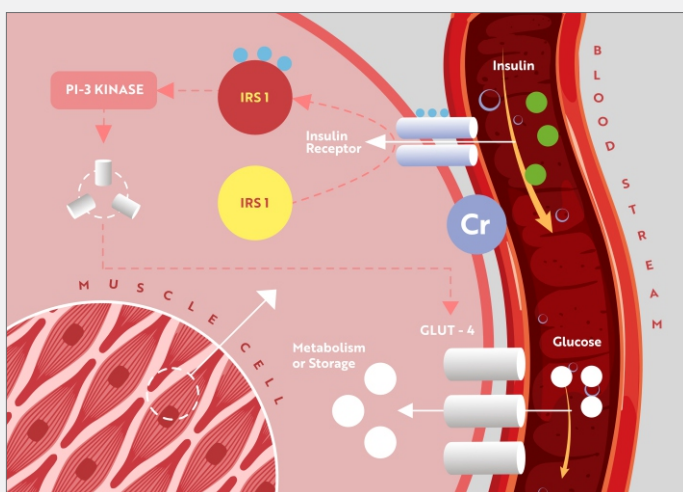
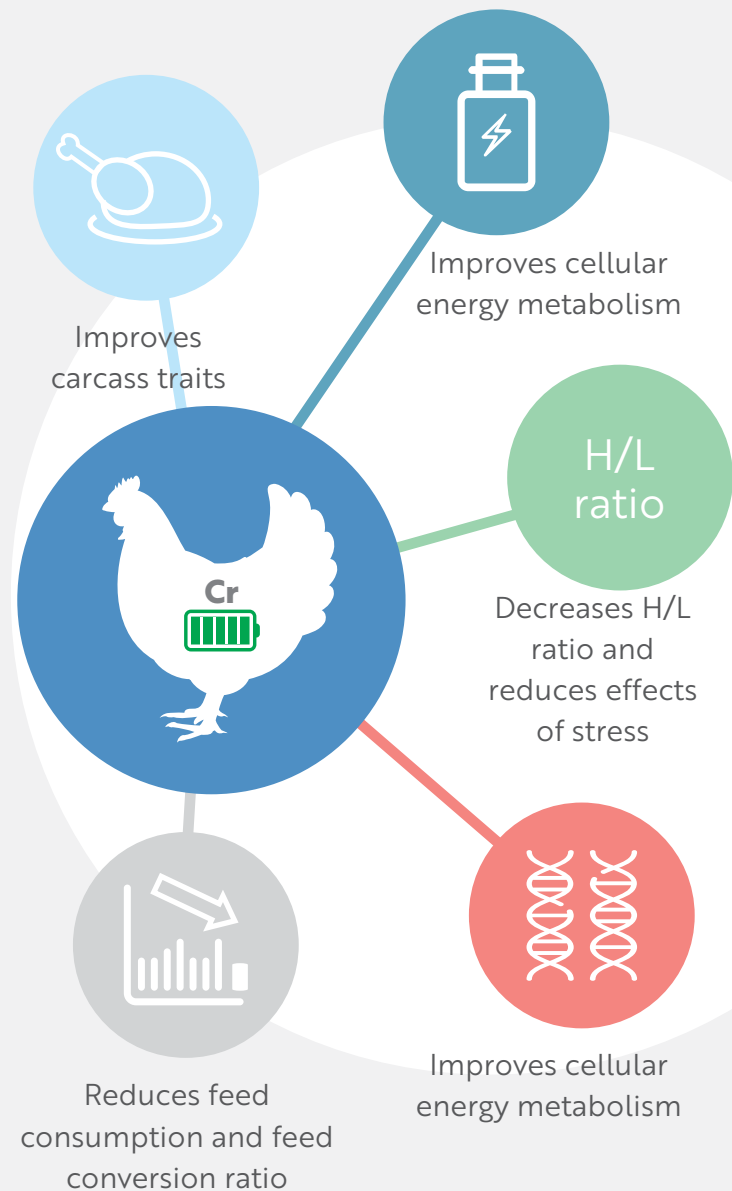


Chromium accelerates energy metabolism and performance during summer

During summer, negative energy balance is very common as birds consume less to avoid heat increment. Glucose is taken up by cells with the help of insulin. Due to several factors especially in older flocks, insulin receptor of cell membrane becomes less sensitive to insulin, resulting to sub-optimal glucose metabolism.

Additionally, in summer, extra surge of corticosterone reduces insulin sensitivity. Supplementation of chromium in summer improves the sensitivity of insulin receptors resulting in acceleration of glucose uptake and subsequent optimum energy metabolism.

Body weights of broiler chickens is linearly increased with increasing chromium levels (200, 400, 800 and 1200 ppb) under heat (32.5°C) stress condition (Sahin, K. *et al.*,2002.) In addition with supplementation of chromium, feed intake and feed efficiency were increased, respectively.



Minplex[®] Forte Chromium
The Stabilized Organic Chromium for All Livestock Species

BETTER FEED, BETTER FOOD.[®]
www.bentoli.com

Featured Solution & Benefits

Optimally stabilized to maintain the molecule intact in a wide range of pH between 2.0 and 7.2. Stable in presence of other chelating agents and bio inhibitors in feed. Improves general thriftiness and improves growth and weight gain. Minplex Forte Chromium aids in efficient utilization of high-density ration and helps to ameliorates stress